

river level I

dimensions

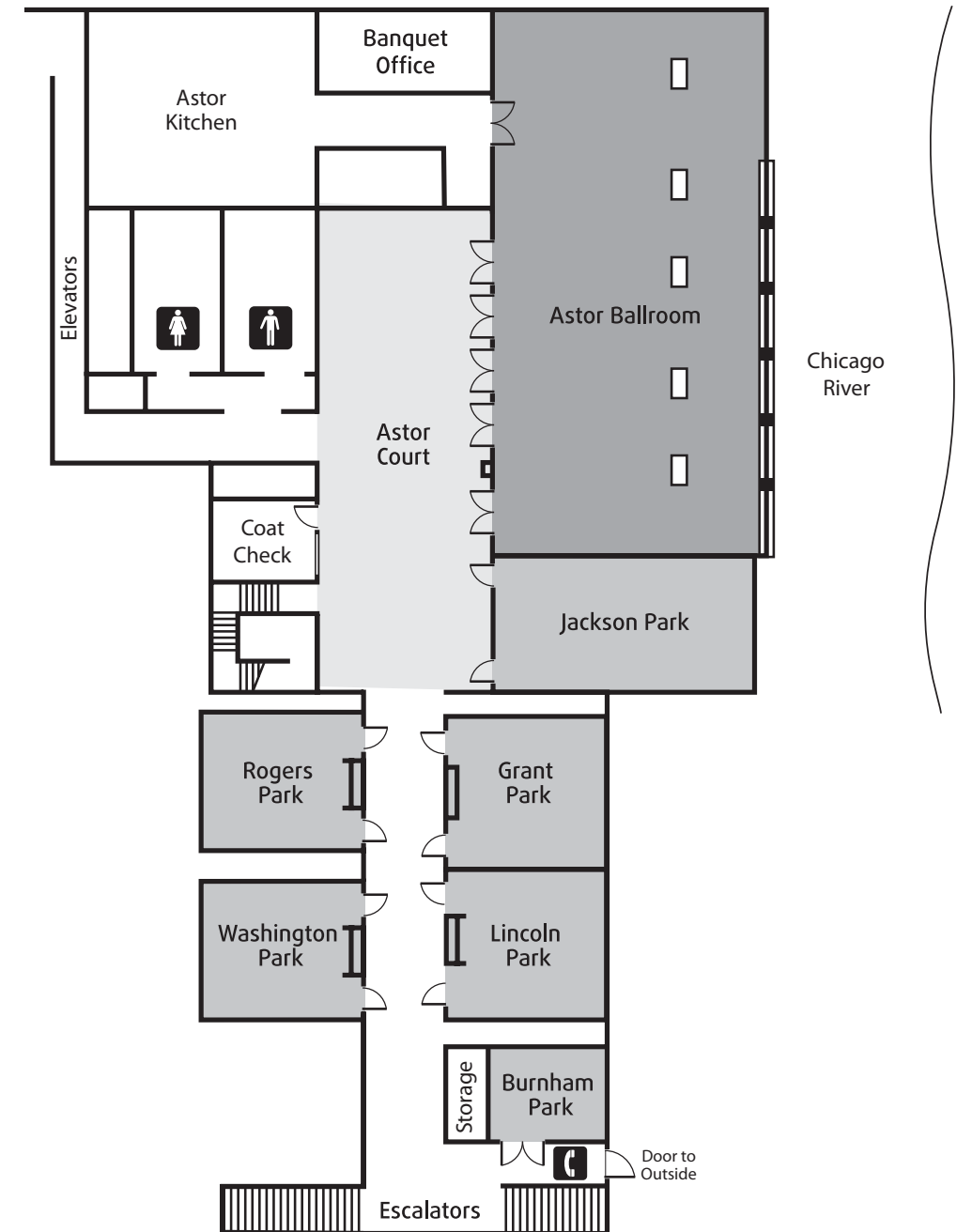
	dimensions	square footage	ceiling height
Astor Ballroom	62'x 46'	2,850	9.5'
Astor Court	40'x 25'	1,000	9.5'
Jackson Park	40.5'x 19.5'	790	9.5'
Grant/Lincoln	30'x 40'	1,200	9.5'
Lincoln Park	30'x 20'	600	9.5'
Grant Park	30'x 20'	600	9.5'
Rogers Park	20'x 20'	410	9.5'
Washington Park	20'x 20'	410	9.5'
Burnham Park	22'x 11'	240	9.5'

capacity

	banquet	reception	theatre	classroom	conference
Astor Ballroom	210	400	130	100	55
Astor Court	-	200	-	-	-
Jackson Park	50	60	80	40	30
Grant/Lincoln	100	100	100	55	36
Grant Park	40	50	50	25	24
Lincoln Park	40	50	50	25	24
Burnham Park	-	-	-	-	10
Washington Park	30	30	35	20	18
Rogers Park	30	30	35	20	18

features

- Fluorescent and incandescent lighting
- Natural lighting in rooms with river views
- Sound proof walls
- Built-in AV
- High-speed Internet access (fees apply)
- Riverside function area
- Marble flooring
- Built-in coat check
- Riverside access



Room configuration and furnishings may vary.

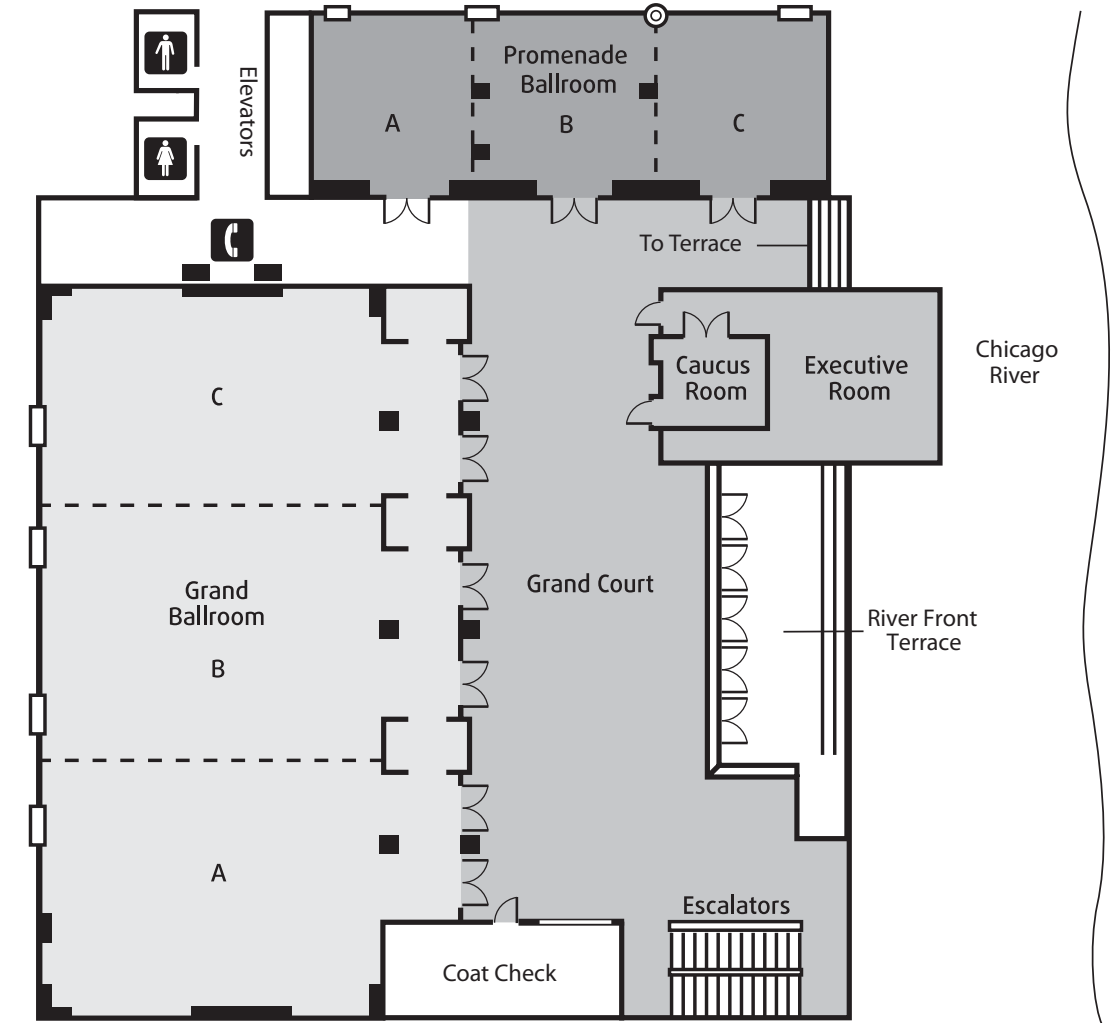
river level II

dimensions

	dimensions	square footage	ceiling height
Grand Ballroom	111' x 76'	8,400	18'
A	76' x 35.6'	2,700	18'
B	76' x 36'	2,740	18'
C	76' x 35.6'	2,700	18'
Grand Court	-	4,600	12'
Promenade Ballroom	83' x 43'	3,540	12'
A	43' x 24.6'	1,050	12'
B	43' x 30'	1,300	12'
C	43' x 24.6'	1,050	12'
Executive Room	32' x 27'	864	12'
Caucus Room	12' x 15'	180	12'

capacity

	banquet	reception	theatre	classroom	conference
Grand Ballroom	700	1,000	900	480	-
A	200	375	280	155	55
B	200	375	280	155	55
C	200	375	280	155	55
Grand Court	-	700	-	-	-
Promenade Ballroom	300	400	200	180	-
A	80	100	80	60	40
B	80	100	80	60	40
C	80	100	80	60	40
Executive Room	50	100	50	45	35
Caucus Room	-	-	-	-	6



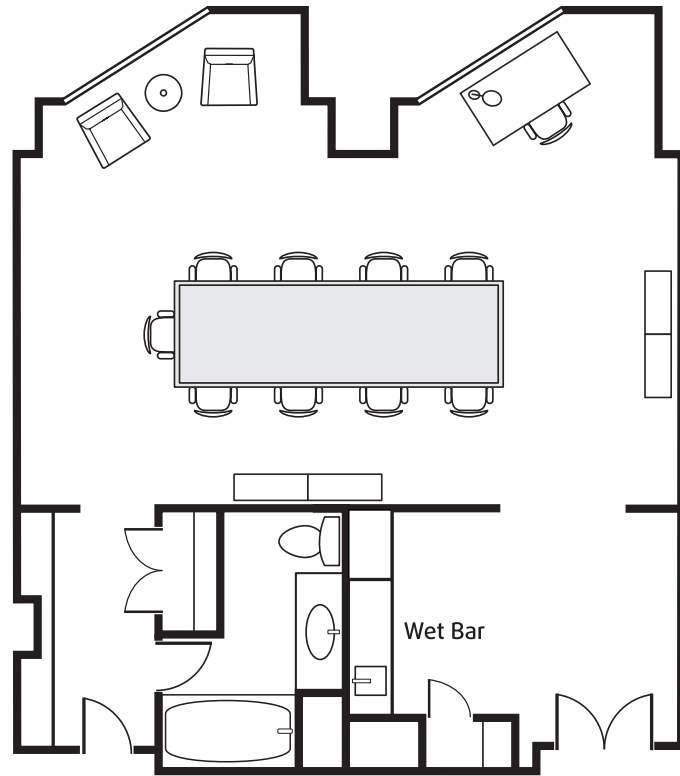
features

- Fluorescent and incandescent lighting
- Natural lighting in Grand Court
- Sound proof walls
- Built-in AV
- High-speed Internet access (fees apply)
- River Front Terraces
- Built-in coat check*

* Space available for rent.

Room configuration and furnishings may vary.

meeting room



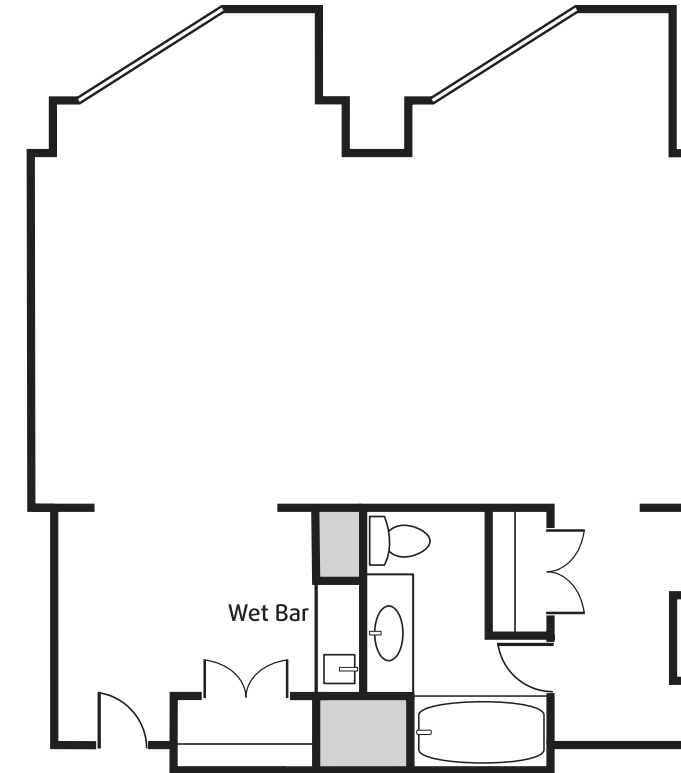
Located on 18th floor, room 1808

features

- 405 sq. ft. with a reception capacity for 12
- Dimension of parlor is 27'5" x 15'
- Permanent conference table for up to 10
- Large flat screen TV on wall
- Separate work desk
- Main entry foyer with wet bar measures 10'x10"
- Full bathroom
- Two entry doors
- High-speed Internet access (**fees apply**)
- Three dual-line telephones (**one cordless**) with voice mail and data port
- Two window nooks overlooking the Chicago River or downtown

Room configuration and furnishings may vary.

hospitality suite



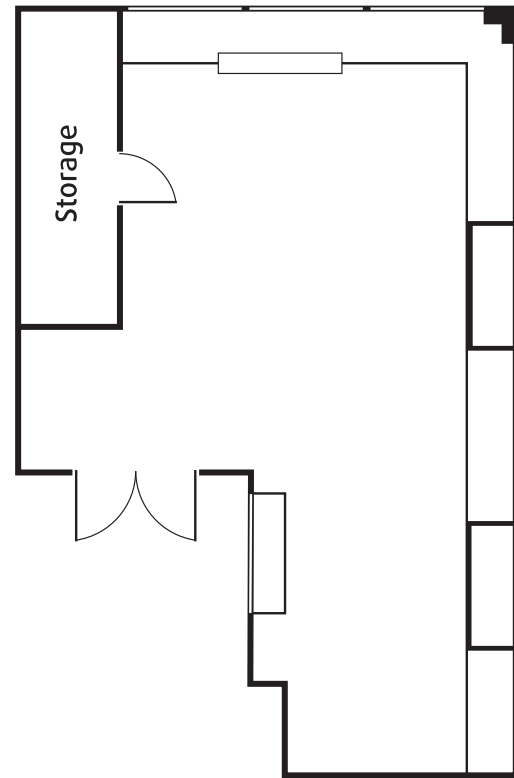
Two hospitality suites are available with this floor plan located on third floor
Rooms 309 and 312

features

- 405 sq. ft. with a reception capacity for 30
- Dimension of parlor is 27'5" x 15'
- Conference table for up to 20
- Main entry foyer with wet bar measures 10'x10"
- Full bathroom
- Two entry doors
- High-speed Internet access (**fees apply**)
- Three dual-line telephones (**one cordless**) with voice mail and data port
- Two window nooks overlooking the Chicago River or downtown

Room configuration and furnishings may vary.

gallery

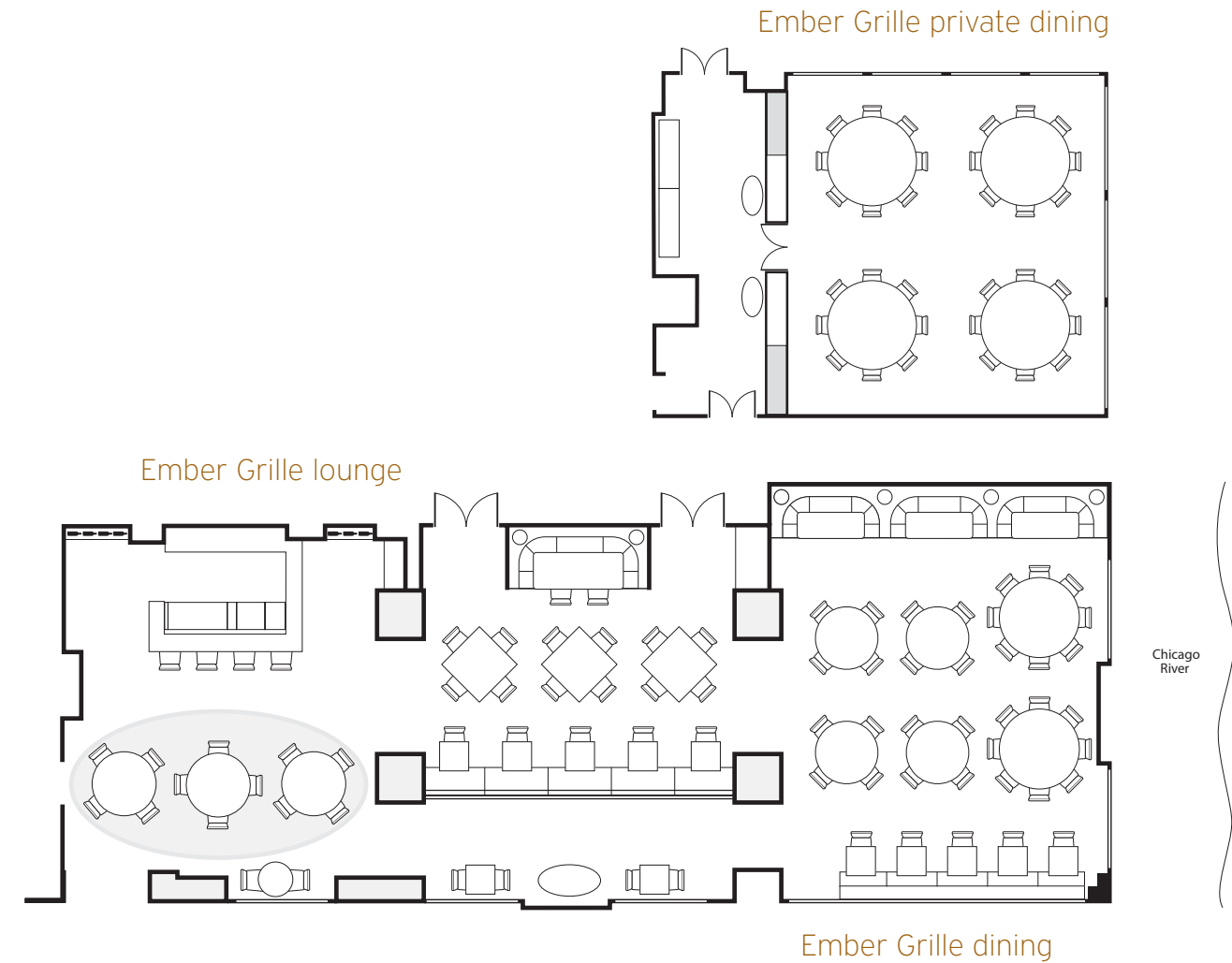


features

- 190 sq. ft. private reception/meeting space located on main level
- Accommodates up to: 40 for receptions; 20 for board meetings; 30 for banquets
- Room features floor-to-ceiling windows, with four display cases
- In-house art work on display
- Large storage room
- 104 sq. ft. entry foyer with glass entry doors

Room configuration and furnishings may vary.

ember grille



features

Ember Grille

- Accommodates up to 200 total*;
80 for private party
- 325 sq. ft. lounge/private bar area
- Two main dining rooms; one at 325 sq. ft., one at 676 sq. ft.
- Located on main level
- Overlooks the Chicago River

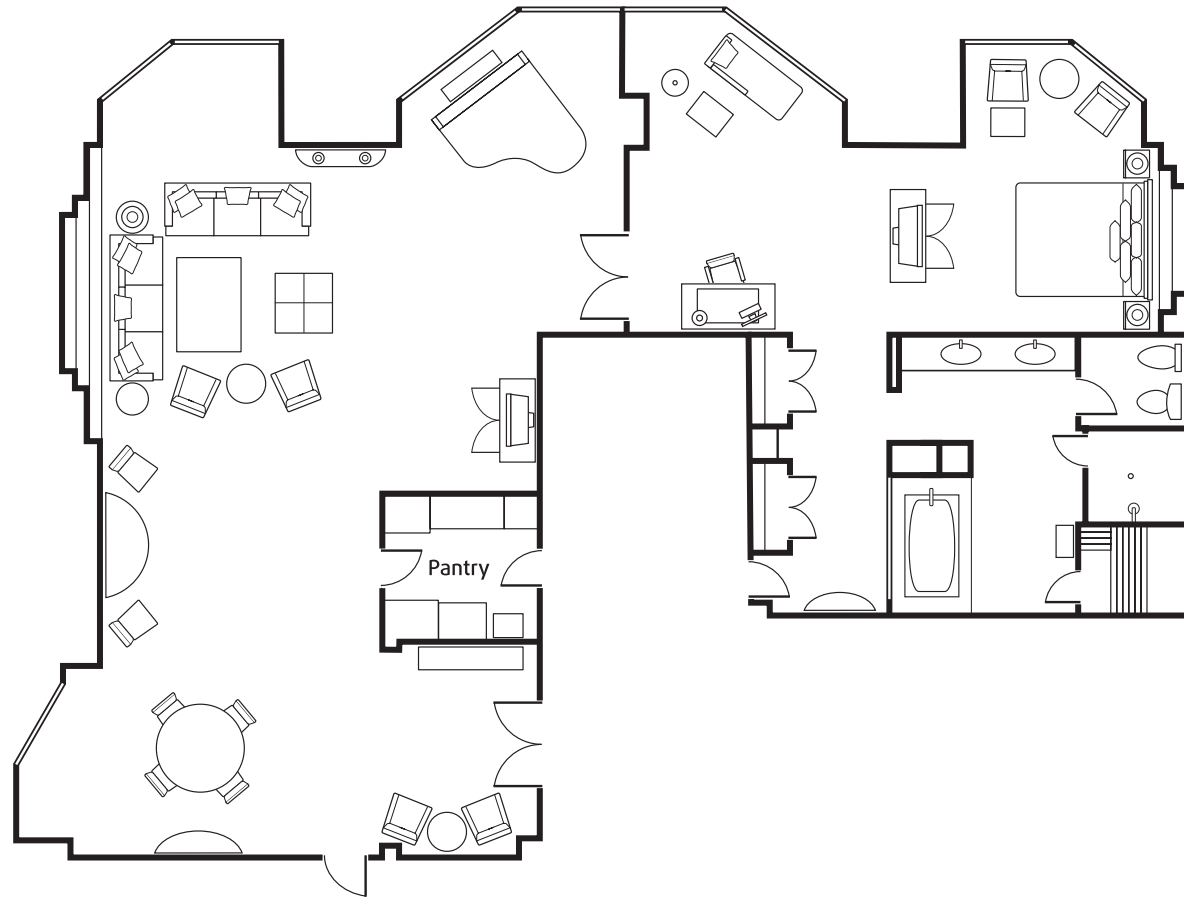
Ember Grille private dining room

- 1176 sq. ft. main room
- 420 sq. ft. pre-function foyer
- Accommodates up to: 50 for a reception; 30 for meetings; 50 for dining
- Located directly next to Ember Grille main dining rooms
- Private entry with street access
- Overlooks the Chicago River

* Requires buy-out of restaurant.

Room configuration and furnishings may vary.

presidential suite



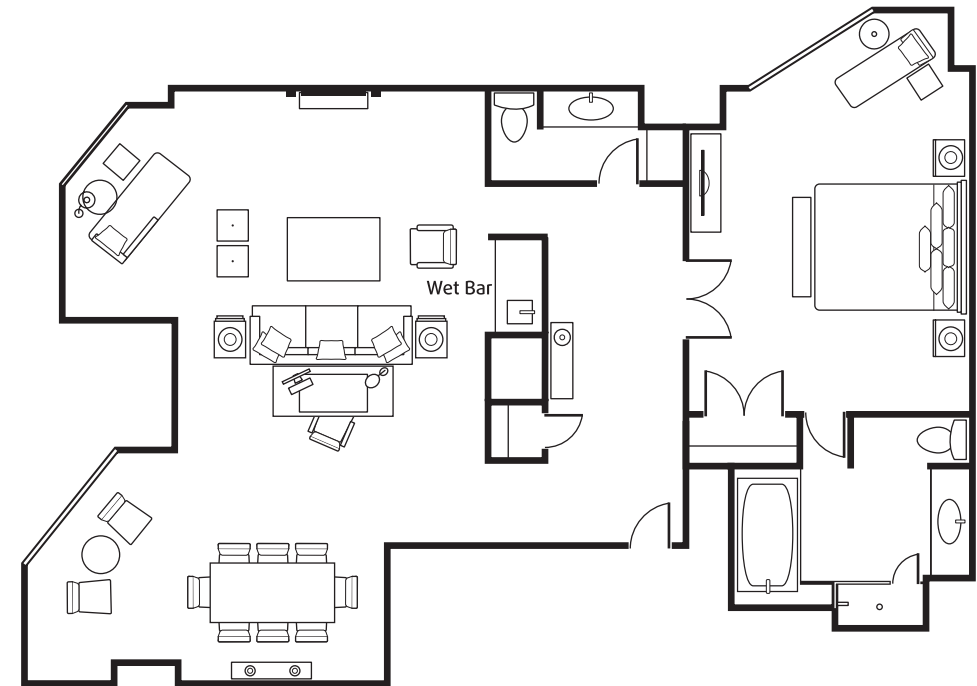
Located on 19th floor

features

- Upgraded Westin Executive Club level amenities (please see page 18 for details)
- Overall space is 2,060 sq. ft.
- Parlor is 800 sq. ft., with reception capacity for 50
- Spacious dining and living area
- Grand piano
- One connecting bedroom available
- Individual climate control in each room
- **Westin Heavenly Bed**®
- Two river view seating areas in bedroom
- iMac® flat screen computer
- iHome® iPod® docking station
- Two entertainment centers with TV
- Bose® sound system
- Wet/bar pantry
- **Westin Heavenly Bath**® with Onyx marble throughout, double sinks, and bidet
- Whirlpool tub with separate shower
- Sauna
- Panoramic Chicago River and downtown views
- Plus features listed under standard guest rooms

Room configuration and furnishings may vary.

luxury suite



Four luxury suites are available, located on floors 18, 19, 20

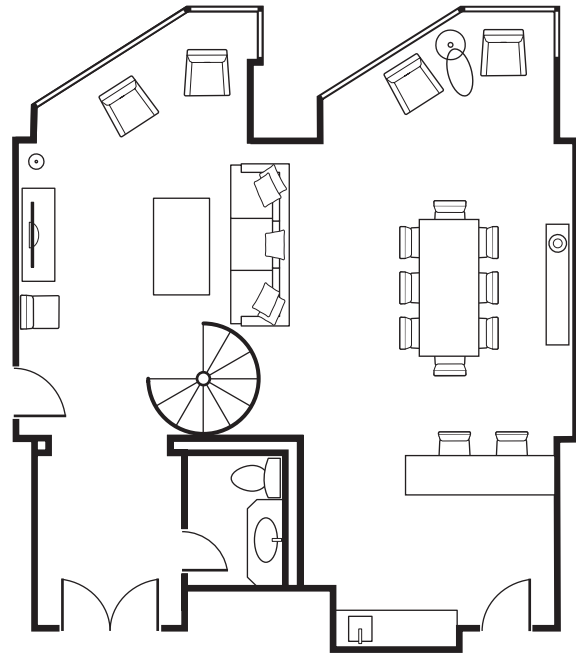
features

- Upgraded Westin Executive Club level amenities (please see page 18 for details)
- Overall space is 1,200 sq. ft.
- Parlor is 660 sq. ft., with reception capacity for 25
- Conference table for eight
- Two river view seating areas in parlor and one in bedroom
- One connecting bedroom available
- Individual climate control in each room
- 50" flat screen TV in parlor
- **Westin Heavenly Bed**®
- iMac® flat screen computer
- iHome® iPod® docking station
- 32" flat screen TV in bedroom
- Bose® sound system
- Wet bar
- Guest powder room
- Private entry foyer
- **Westin Heavenly Bath**® with separate shower
- Plus features listed under standard guest rooms

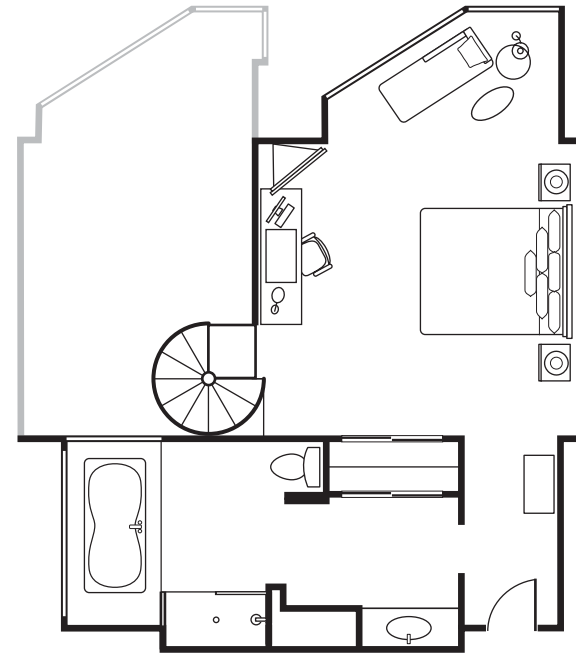
Room configuration and furnishings may vary.

celebrity suite

first floor



second floor



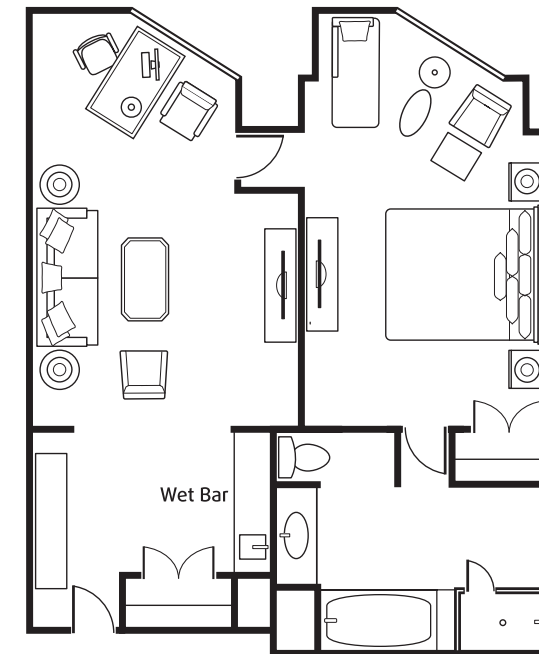
Located on 19th floor

features

- Upgraded Westin Executive Club level amenities (please see page 18 for details)
- Overall space is 1,500 sq. ft. on two levels
- Parlor is 702 sq. ft., with reception capacity for 25
- Conference table for eight
- Two river view seating areas in parlor and one in bedroom
- Dramatic two-story windows
- One connecting bedroom available
- Individual climate control in each room
- Spiral staircase to upper level king bedroom
- Westin Heavenly Bed[®]
- iMac[®] flat screen computer
- iHome[®] iPod[®] docking station
- 42" flat screen TV in parlor and 32" flat screen in bedroom
- Bose[®] sound system
- Kitchen with counter stools at bar
- Guest powder room
- Walk-through closet from bedroom to bathroom
- Westin Heavenly Bath[®] with separate shower
- Kidney shape whirlpool tub
- Plus features listed under standard guest rooms

Room configuration and furnishings may vary.

deluxe one-bedroom suite



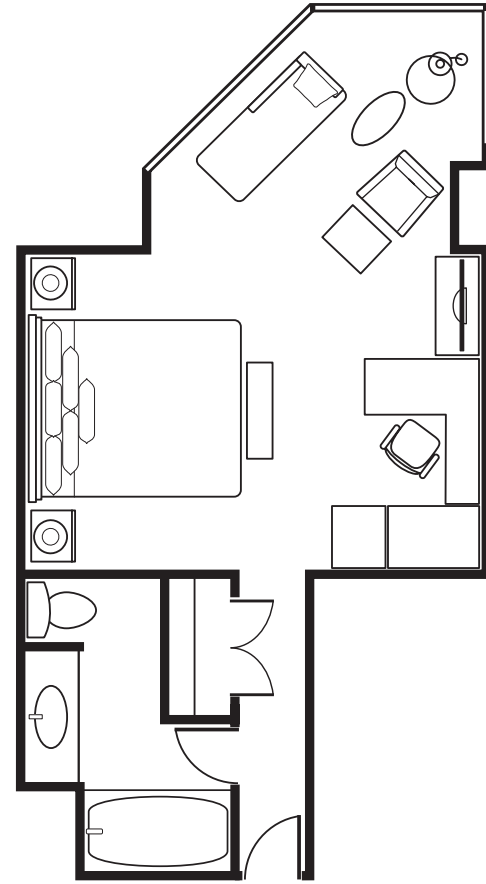
Ten deluxe suites are available, located on floors 18, 19, 20

features

- Upgraded Westin Executive Club level amenities (please see page 18 for details)
- Dimension of parlor is 30' x 13'
- Parlor is 417 sq. ft.
- Westin Heavenly Bed[®]
- High-speed Internet access (fees apply)
- Three dual-line telephones (one cordless), with voice mail messaging and data port
- In-room work desk
- iMac[®] flat screen computer
- iHome[®] iPod[®] docking station
- 32" flat screen TV in parlor and bedroom
- Bose[®] sound system
- Westin Heavenly Bath[®] and separate shower
- Wet bar
- Seating nook with chaise lounge in bedroom
- Plus features listed under standard guest rooms

Room configuration and furnishings may vary.

deluxe river king guest room



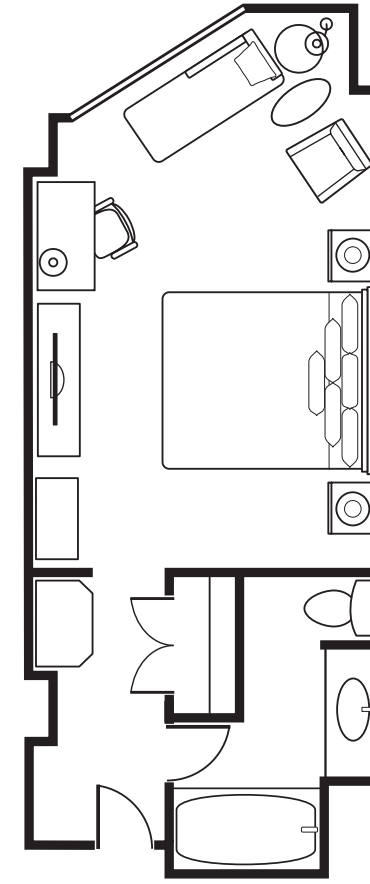
62 rooms are available, located on floors 3-15

features

- Overall space is 543 sq. ft.
- **Westin Heavenly Bed**®
- High-speed Internet access (**fees apply**)
- Three dual-line telephones (**one cordless**) , with voice mail messaging and data port
- Seating nook with chaise lounge
- In-room u-shape work desk
- Cable TV with remote, in-room movies, and Sony PlayStation®
- Coffee maker with Starbucks® coffee
- Mini bar
- Private in-room safe
- Iron/ironing board
- **Westin Heavenly Bath**®
- Hair dryer
- Plush terry bathrobes
- Daily newspaper
- 24-hour room service

Room configuration and furnishings may vary.

standard king guest room



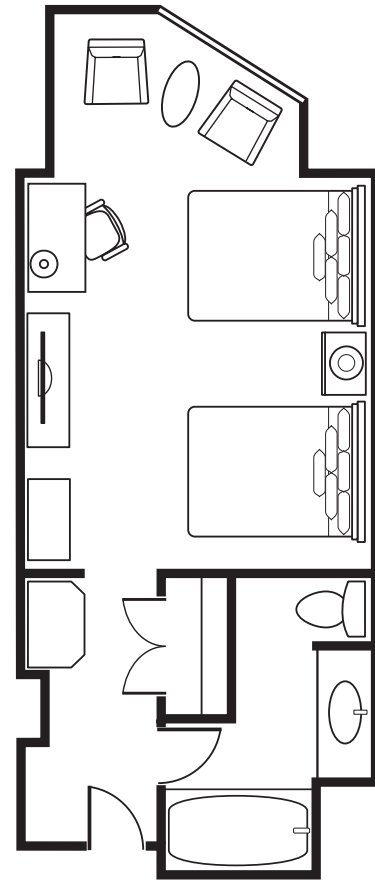
note: Club double rooms feature upgraded Westin Executive Club level amenities

features

- Overall space is 428 sq. ft.
- **Westin Heavenly Bed**®
- High-speed Internet access (**fees apply**)
- Three dual-line telephones (**one cordless**) , with voice mail messaging and data port
- In-room work desk
- Cable TV with remote, in-room movies, and Sony PlayStation®
- AM/FM clock radio
- Coffee maker with Starbucks® coffee
- Mini bar
- Private in-room safe
- Iron/ironing board
- Same day laundry service
- **Westin Heavenly Bath**®
- Hair dryer
- Plush terry bathrobes
- Daily newspaper
- 24-hour room service

Room configuration and furnishings may vary.

standard double guest room



note: Club double rooms feature upgraded Westin Executive Club level amenities

features

- Overall space is 428 sq. ft.
- **Westin Heavenly Bed**®
- High-speed Internet access (fees apply)
- Three dual-line telephones (one cordless), with voice mail messaging and data port
- In-room work desk
- Cable TV with remote, in-room movies, and Sony PlayStation®
- AM/FM clock radio
- Coffee maker with Starbucks® coffee
- Mini bar
- Private in-room safe
- Iron/ironing board
- Same day laundry service
- **Westin Heavenly Bath**®
- Hair dryer
- Plush terry bathrobes
- Daily newspaper
- 24-hour room service

Westin Executive Club level amenities

Westin Executive Club lounge

- Located on 20th floor
- Private Concierge
- Complimentary continental breakfast, afternoon hors d'oeuvres, and honor bar
- Two 42" flat screen TVs
- Separate work and lounge areas
- iMac® flat screen computer
- Complimentary High-speed Internet access

Westin Executive Club guest rooms

- Located on floors 16-20
- Privileges of the Westin Executive Club lounge
- Three dual-line telephones (one cordless) with voice mail messaging and data port
- Complimentary High-speed Internet access
- In-room work desk
- iMac® flat screen computer
- iHome® iPod® docking station
- 32" flat screen TV
- Complimentary bottle of water each day
- **Westin Heavenly Bed**®
- Coffee maker with Starbucks® coffee
- Mini bar
- Private in-room safe
- Iron/ironing board
- **Westin Heavenly Bath**®
- Hair dryer
- Plush terry bathrobes
- Daily newspaper
- 24-hour room service
- Evening turn-down service
- Access to the **Westin WORKOUT**® powered by Reebok® Gym
- Complimentary shoe shine